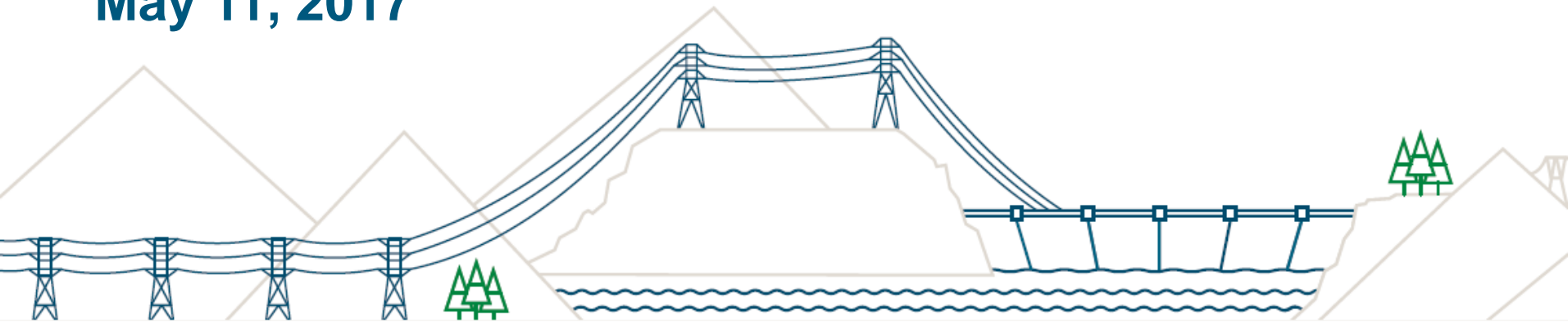


Site C Project Peace River Channel Contouring and Side Channel Enhancement

Meeting with PRRD Board

May 11, 2017



May 11, 2017

Background

- The Peace River has fluctuating water levels which can cause some areas to become dewatered
- To support fish and fish habitat, BC Hydro is completing work to enhance Peace River fish habitat in select areas near the Site C dam site
- This work meets Site C Environmental Assessment Certificate and Federal Decision Statement conditions, and is described further in the Site C Fisheries and Aquatic Habitat Management Plan¹.

¹ Fisheries and Aquatic Habitat Management Plan available at

https://www.sitecproject.com/sites/default/files/Fisheries_and_Aquatic_Habitat_Management_Plan.pdf

Scope of Work: 2017-2019

- Planned fish habitat enhancement in side channels of the Peace River between Site C dam site and Old Fort, and the gravel bars in the main channel of the Peace River contoured (reshaped)
- All necessary permits and authorizations obtained by BC Hydro before the work commences
- Proposed method is 'cut and fill' excavation in shallow water habitats that are at risk of being dewatered
- Shallow habitats excavated to below the water elevation that occurs at minimum Site C flows (i.e. 390 m³s), and this material used to fill habitats that are at risk of dewatering near shore
- Riprap placement on channel slopes in some areas adjacent to the community of Old Fort to prevent further bank erosion

Peace Water Use Planning

Peace River Channel Enhancement

Peace Island Park

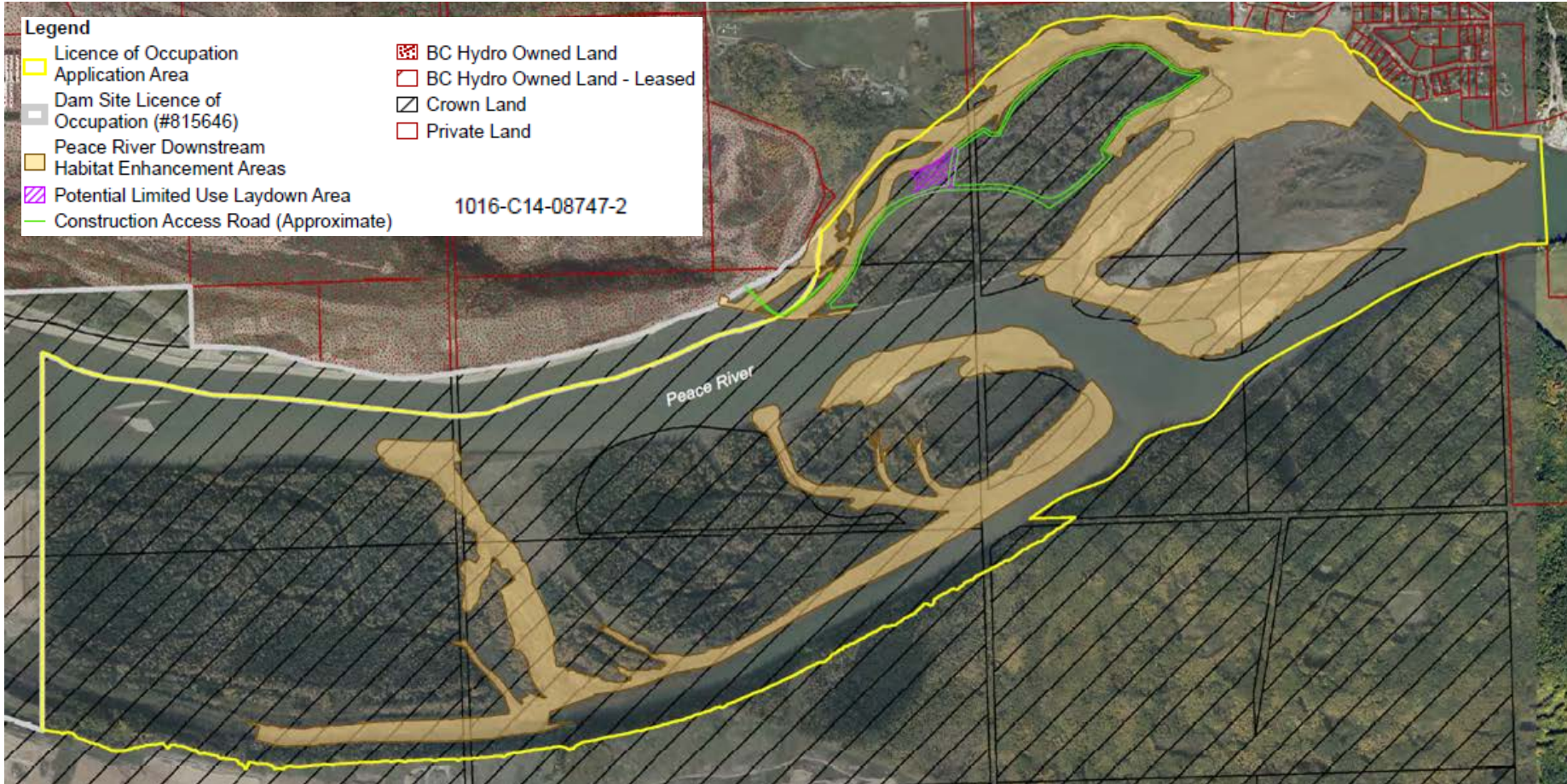
NB-7



May 11, 2017

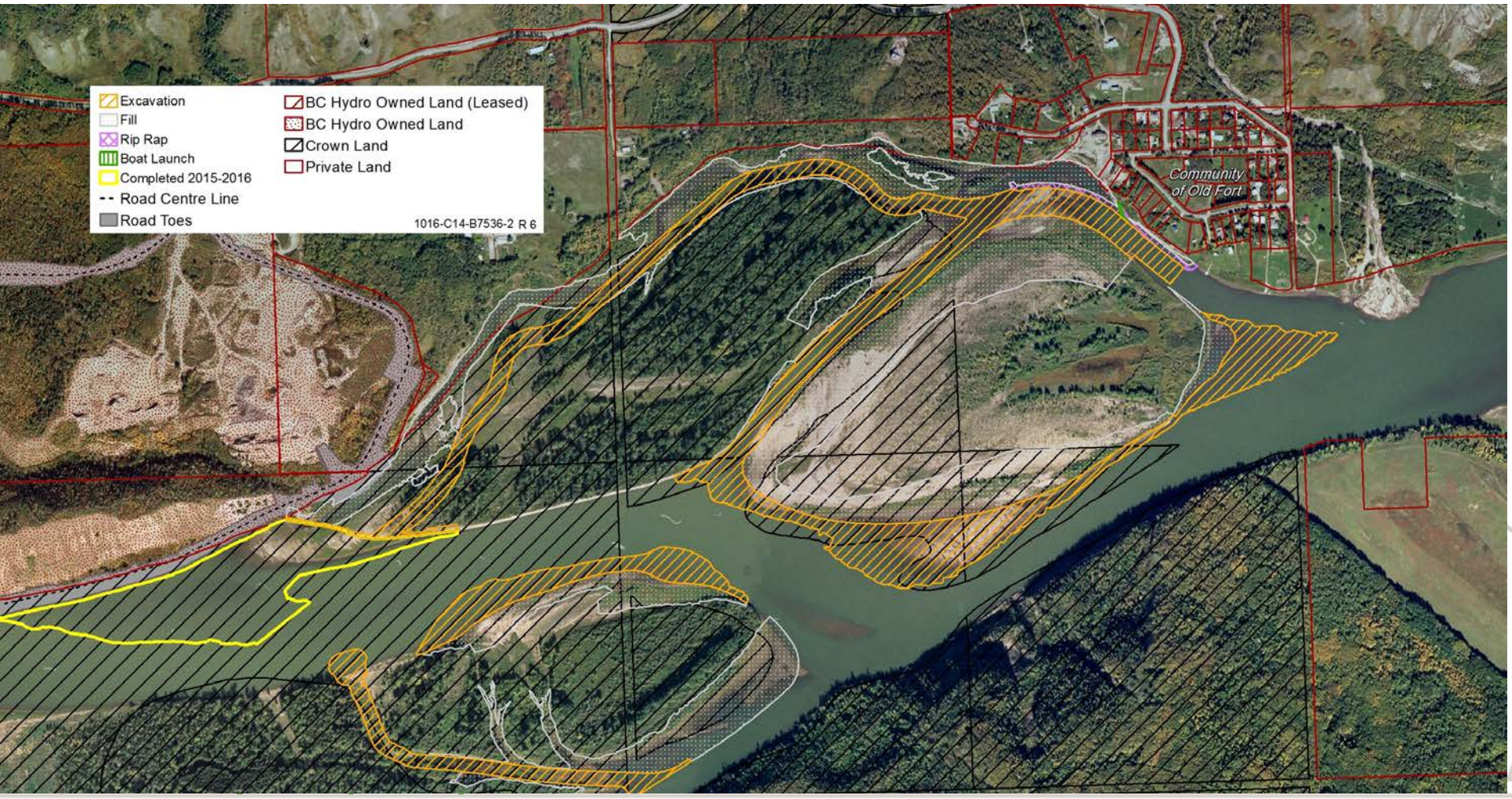
Licence of Occupation Area

NB-7



May 11, 2017

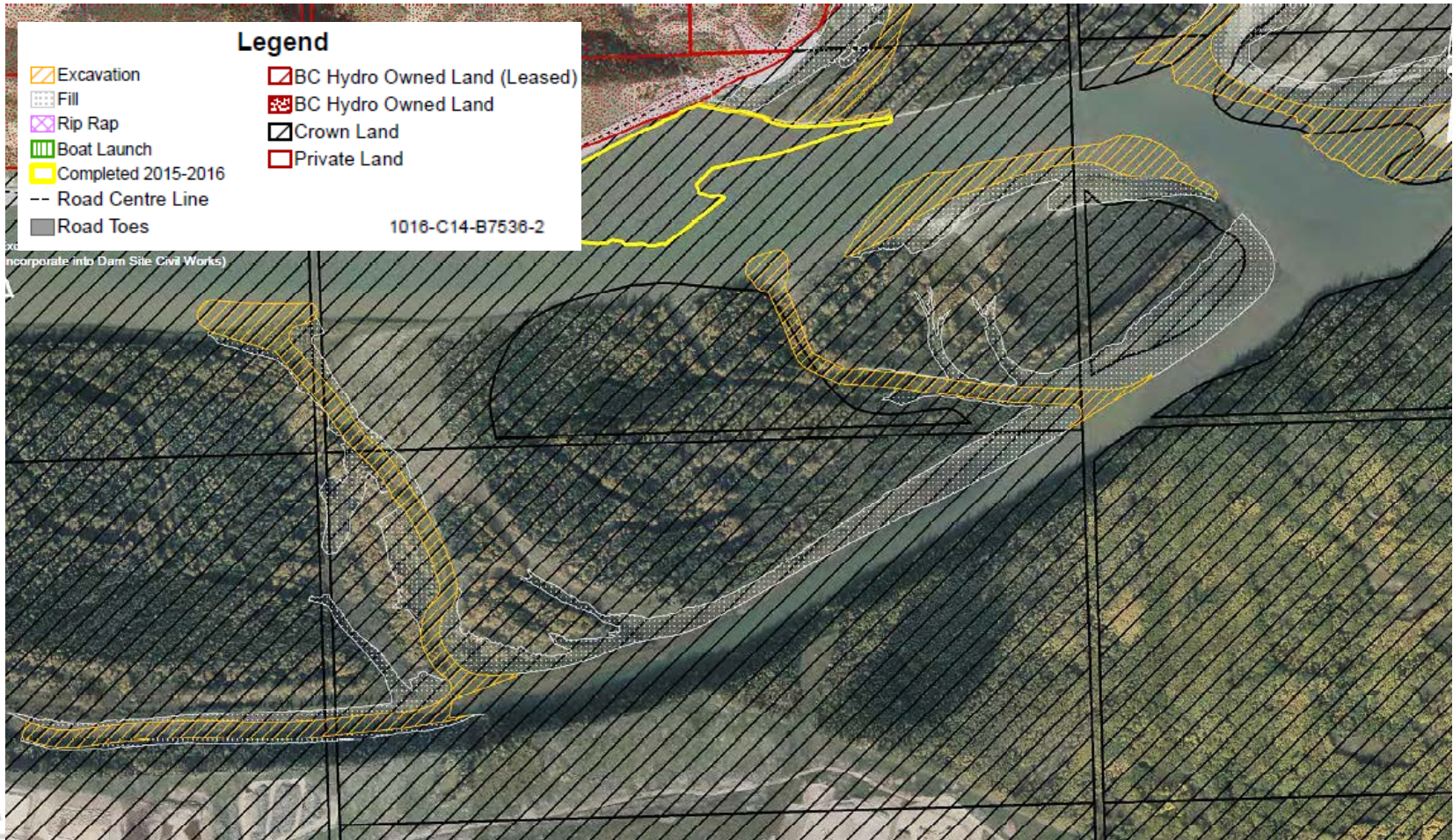
North Bank Channel Contouring and Side Channel Enhancement



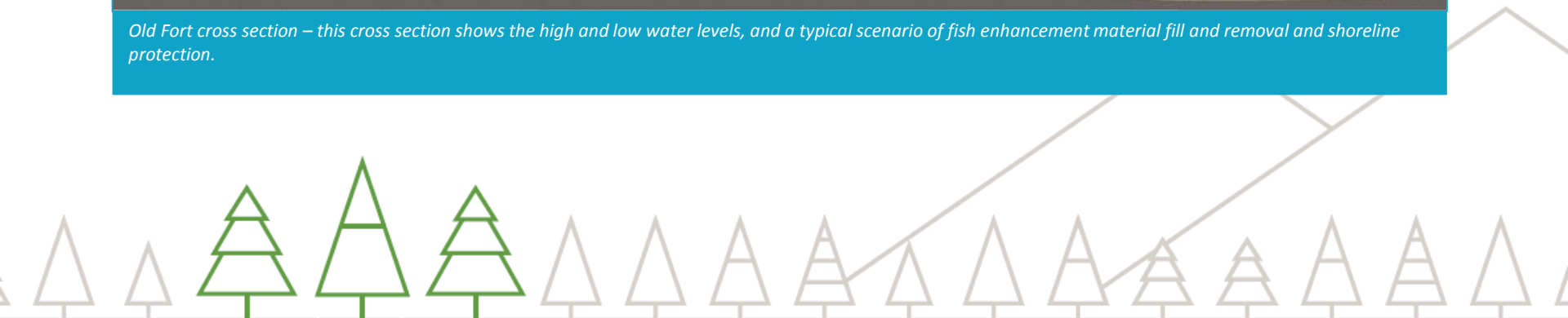
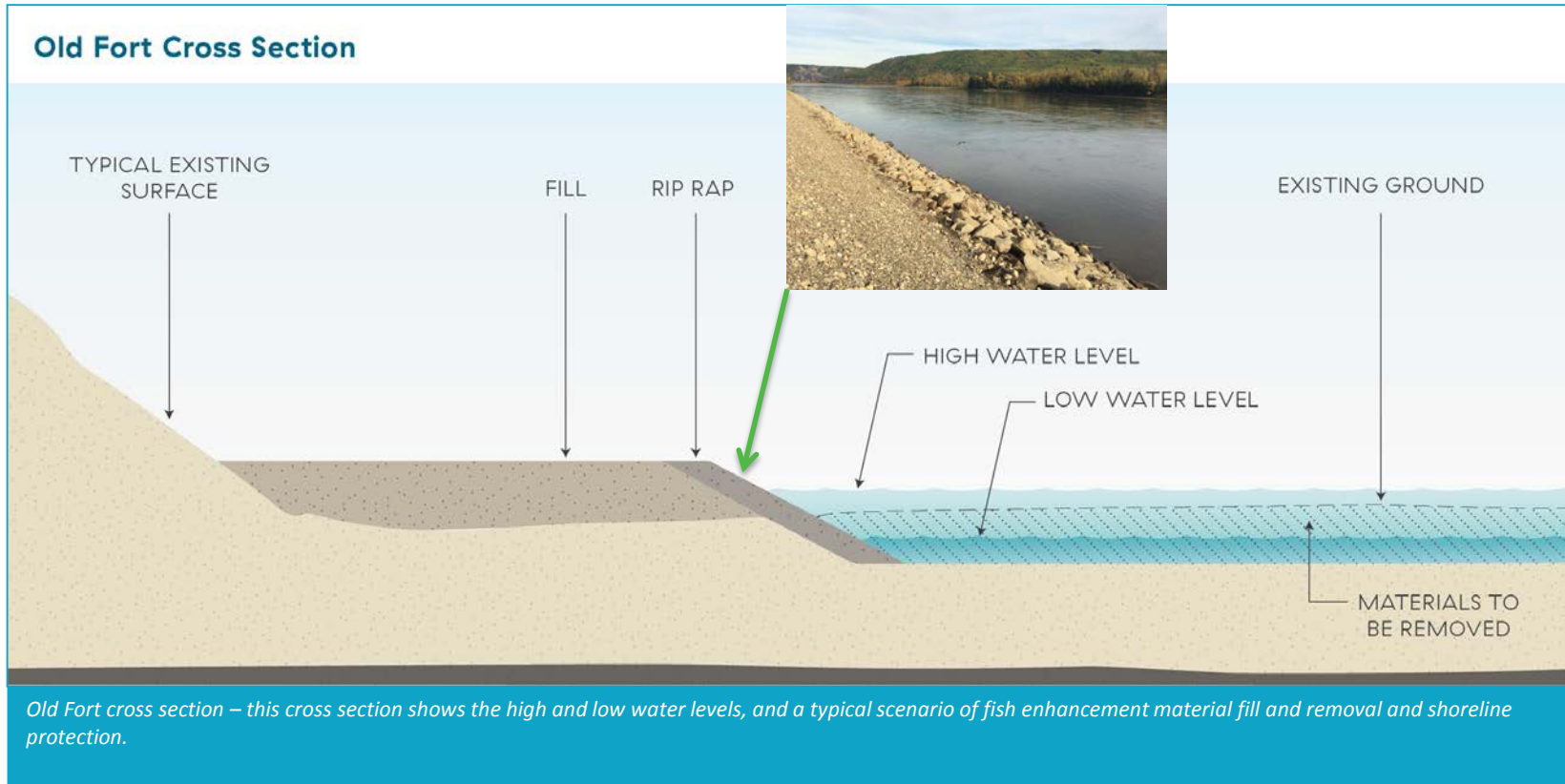
May 11, 2017

South Bank Channel Contouring and Side Channel Enhancement

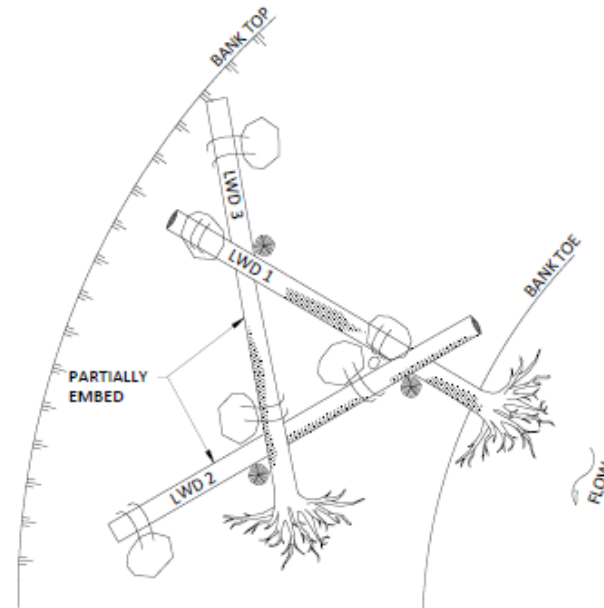
NB-7



May 11, 2017



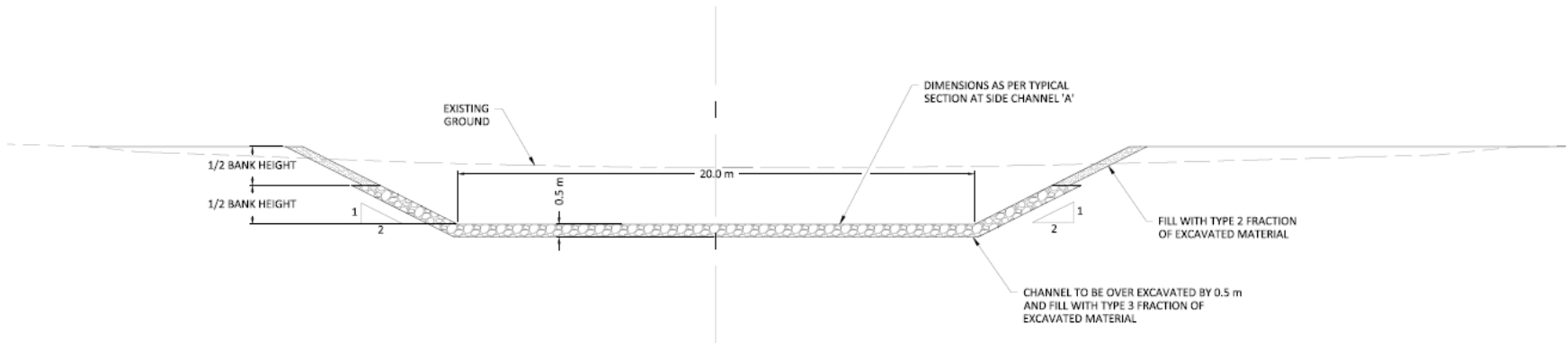
Design Features



Large Woody Debris Structures within South Bank Channels



Channel Enhancement



TYPICAL GRADE CONTROL SECTION AT SIDE CHANNEL 'A'
1:100

LEGEND:

-  TYPE 2 MATERIAL
-  TYPE 3 MATERIAL



Access and Equipment

- Access to Old Fort island through Site C dam site off temporary access from BC Hydro River Road
- Temporary use laydown area on Old Fort island
- Equipment including, but not limited to: Excavators (i.e. GPS enabled and long arm), dozers , off –road articulated dump truck, construction office, pumps



May 11, 2017



Environmental Considerations

- Site specific environmental protection plan (EPP) developed by the contractor with areas of focus including, but not limited to:
 - Site specific restoration and reclamation plan (i.e. riparian zone planting and hydro seeding)
 - Surface water quality management
 - Fisheries and aquatic habitat management
 - Spill Prevention and Response



Properties Considerations

- To mitigate potential existing slope stability concerns, the Old Fort channel design was updated in April, moving the channel further south.
- The updated channel alignment mitigates potential slope stability and bank erosion in some areas adjacent to the community of Old Fort.
- Several homeowners had requested an accelerated construction timeline to mitigate the erosion on their properties.
- With the new channel alignment design, the right of access to water for a number of upland owners will be affected as a result of moving the channel further away and filling the existing channel.
- To date, BC Hydro has met with property owners twice, in Nov 2016 and April 2017, to present the initial and revised channel alignment designs, respectively.
- Timeline to present agreements to impacted owners is anticipated in next few weeks.
- BCH will ensure affected landowners are fairly compensated.

Keeping the community informed

Bi-weekly bulletins

BC Hydro Power smart

January 22, 2016

January 7

as modular dormitory units

am site.

dam site.

iving, including vibratory

February 5, 2016

February 21

January 21:

continue, as modular dormitory units

the Moberly River and

of the dam site.

er at the dam site.

. Pile driving, including vibratory

es will continue on the

ence of the Moberly River and

he south bank.

orth bank.

s on the north bank.

ment to the dam site area.

information in our

February 19, 2016

March 6

March 6:

ill continue.

ank of the dam site area.

nce activities will continue on the

ws and equipment to the dam site area.

0 kV transmission line.

Bear Flat.

in the latest information in our

hauling of rock and timber continues,

ed industrial traffic on resource

place seven days per week, with

ing in Wuthrich Quarry.

the weekends. Some noise will

scheduled construction activities,

els.

work areas. These areas are

March 4, 2016

CONSTRUCTION BULLETIN

Site C Construction Schedule: March 7 – March 20

The following construction activities are scheduled to occur March 7 – March 20:

- Construction of the worker accommodation lodge and other buildings will continue. The first phase of the lodge (300 beds) will be open and in use.
- Clearing, excavation and road construction will continue on the north bank of the dam site area.
- Excavation and in-river roadwork will continue in and around the Peace River at the dam site.
- Construction of the temporary Peace River construction bridge will continue. Pile driving is being used to construct the bridge.
- Vegetation and tree clearing will occur in the area in and around the confluence of the Moberly River and along the Peace River.
- Clearing and other work will continue on the south bank. Road maintenance activities will continue on the south bank petroleum development roads.
- Security gates, guard buildings and mobile trailers will be installed.
- The main civil works contractor is expected to begin mobilization of crews and equipment to the dam site area. Survey work and site investigation will occur on the north and south bank.
- Operations will continue in Wuthrich Quarry.
- Vegetation and tree clearing will occur to accommodate future work in Portage Mountain Quarry.
- The Ministry of Transportation and Infrastructure's contractor may mobilize and begin work on public roads. Clearing will occur along 271 Road and Old Fort Road.
- Geotechnical investigations will occur along the right-of-way for the 500 kV transmission line.
- Geotechnical investigations may occur along Highway 29 at Cache Creek/Bear Flat.

Please note that all activities listed in this construction bulletin are based on the latest information in our construction plan and are subject to change.

What to Expect

While this work takes place, local residents can expect the following:

- There will be truck traffic in the area as construction crews mobilize, the hauling of rock and timber continues,

May 11, 2017

Information and notification program

Multiple ways to get information about construction



Website info and email sign ups at: sitecproject.com



Twitter handle: [@sitecproject](https://twitter.com/sitecproject)



Construction info: [1-877-217-0777](tel:1-877-217-0777)



Email inquiries: sitec@bchydro.com



Sign up online for Site C Business Directory; Attend business information meetings/business-to-business networking sessions; Get to know BC Bid: www.bcbid.gov.bc.ca

Peace River Channel Contouring and Side Channel Enhancement

- Questions?

